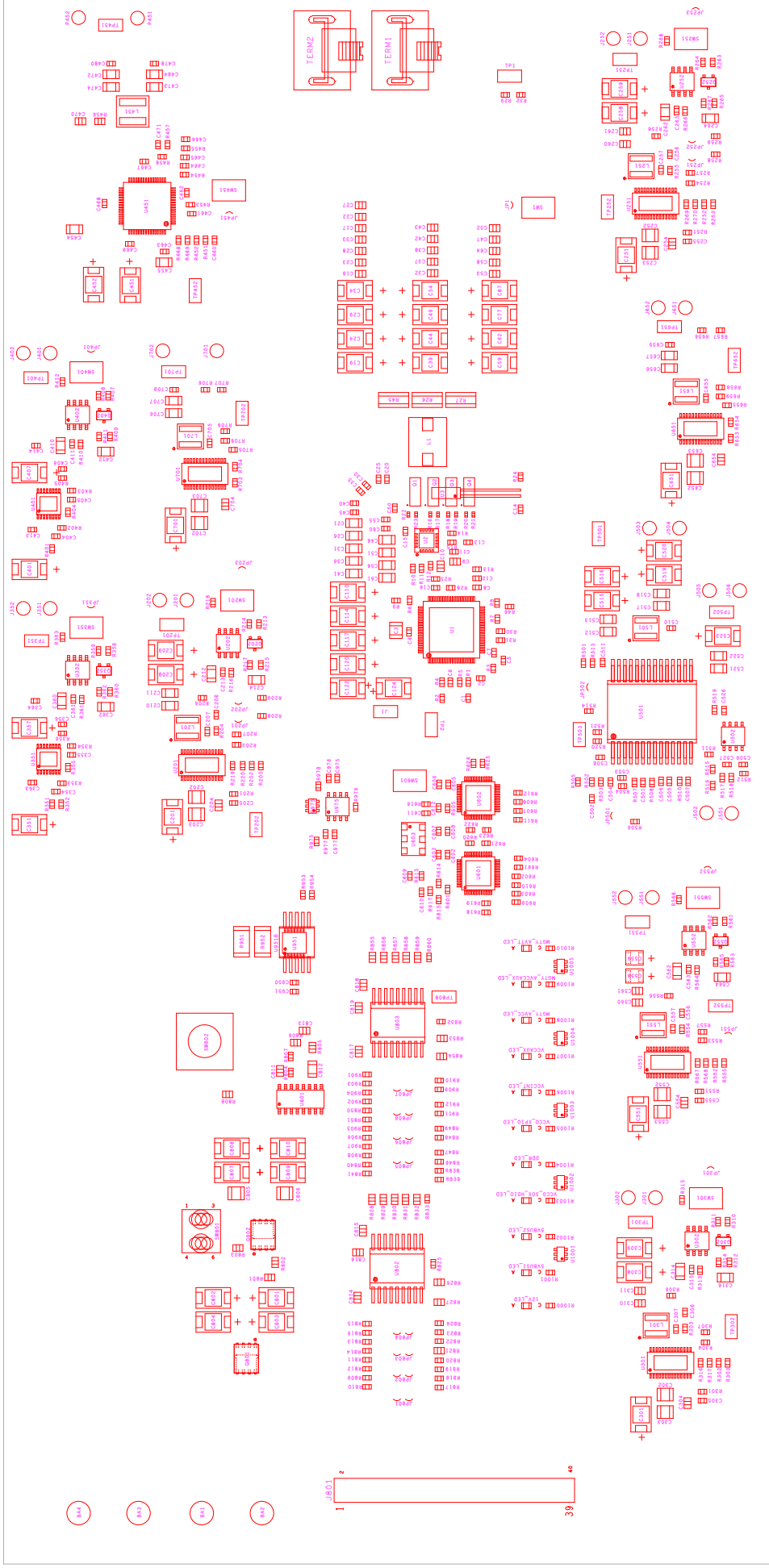
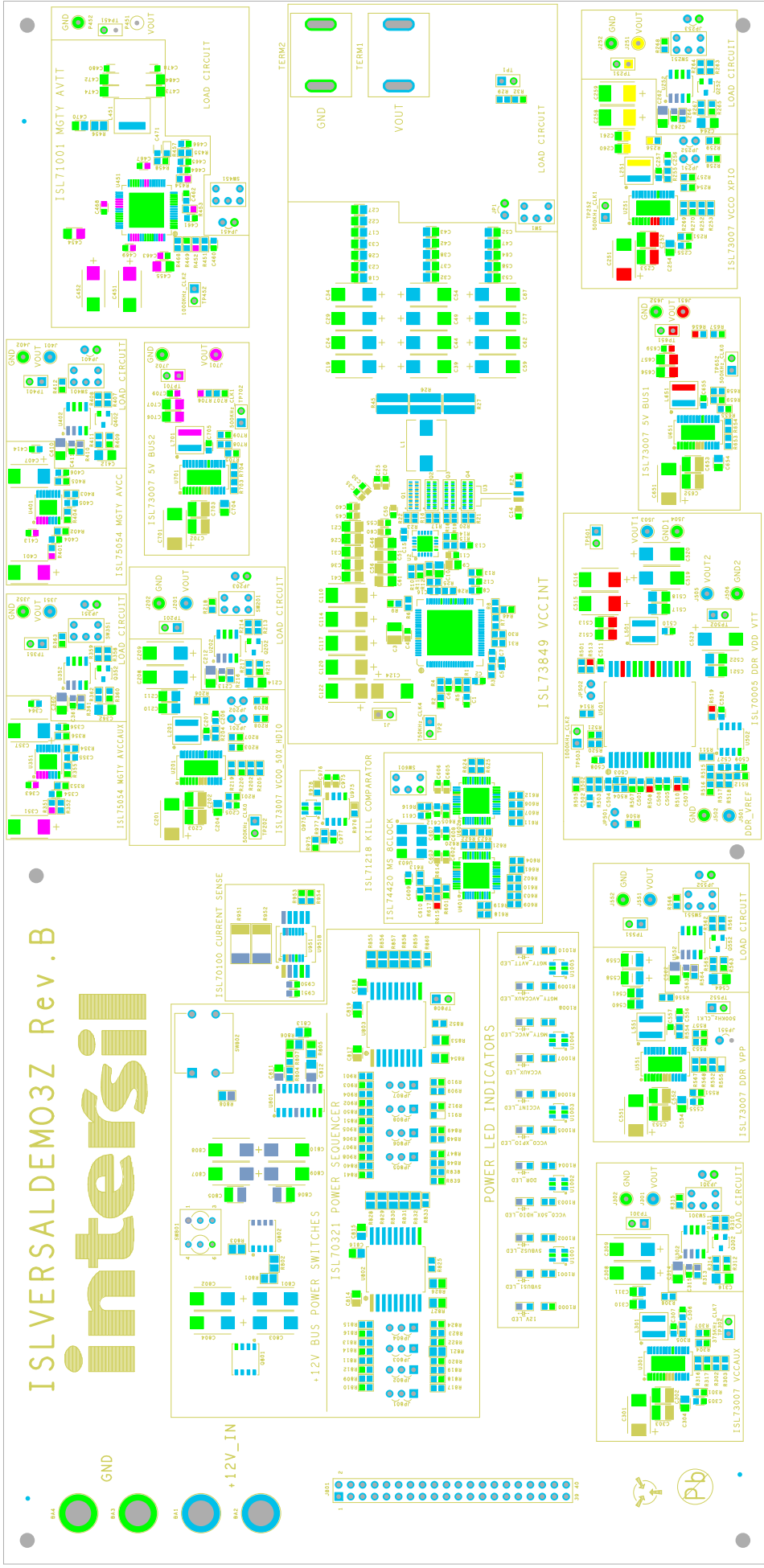


# ISLVERSALDEMO3Z Rev.B



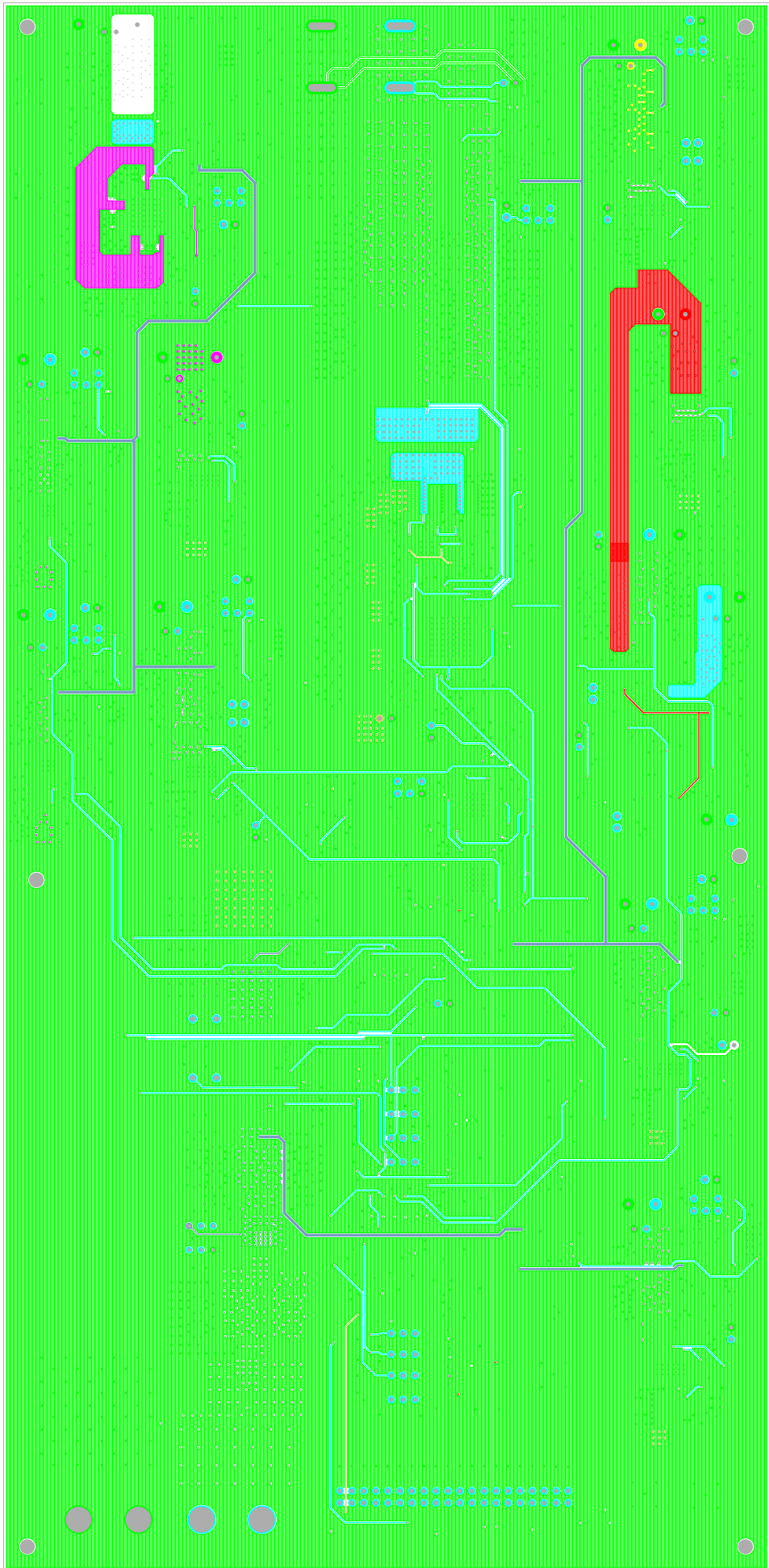
ASSEMBLY TOP  
INTERISL  
07-23-2024



TOP LAYER COMPONENT SIDE  
INTERSIL  
07-23-2024

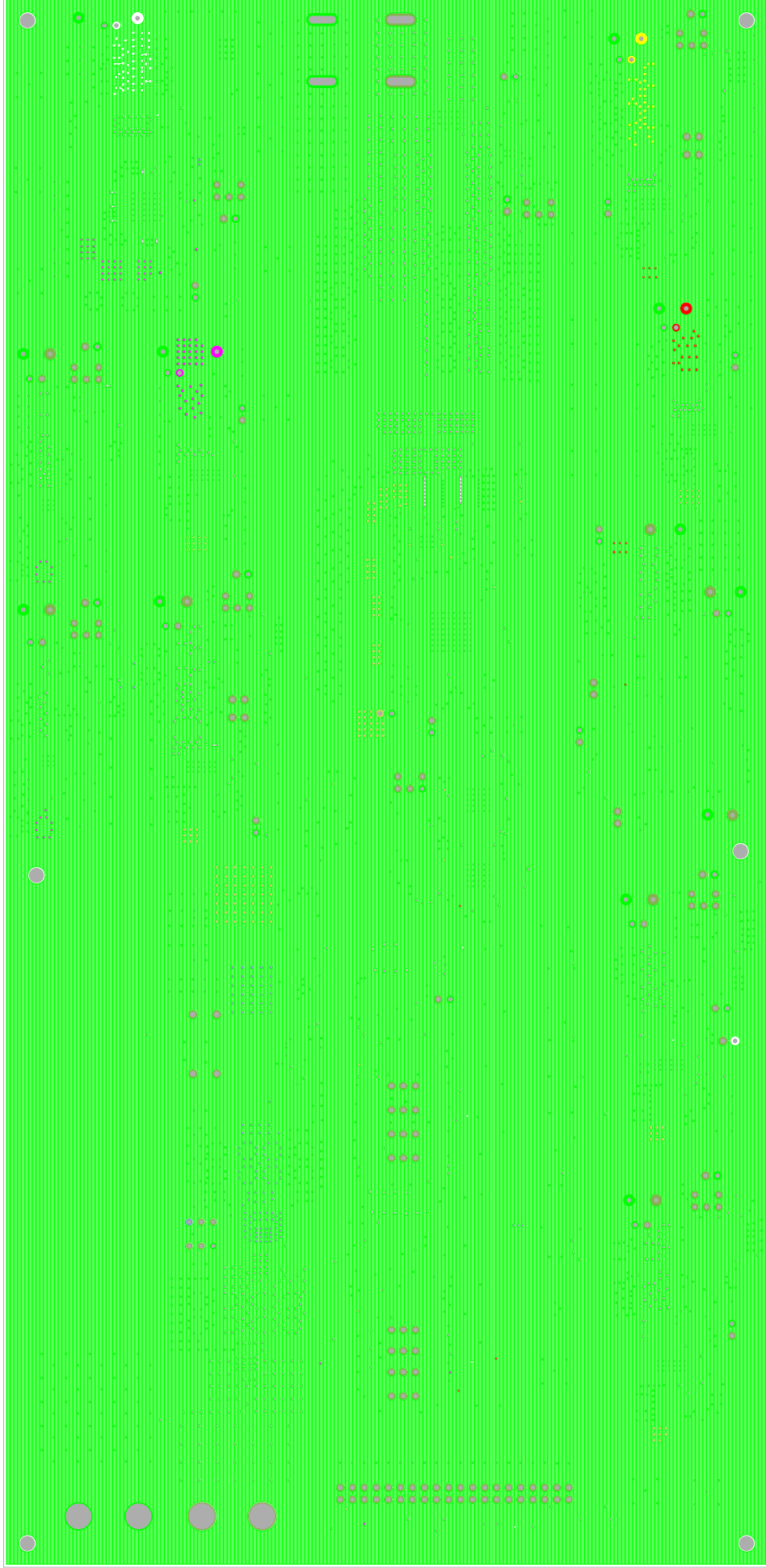


ISLVERSADEMO3Z Rev.B



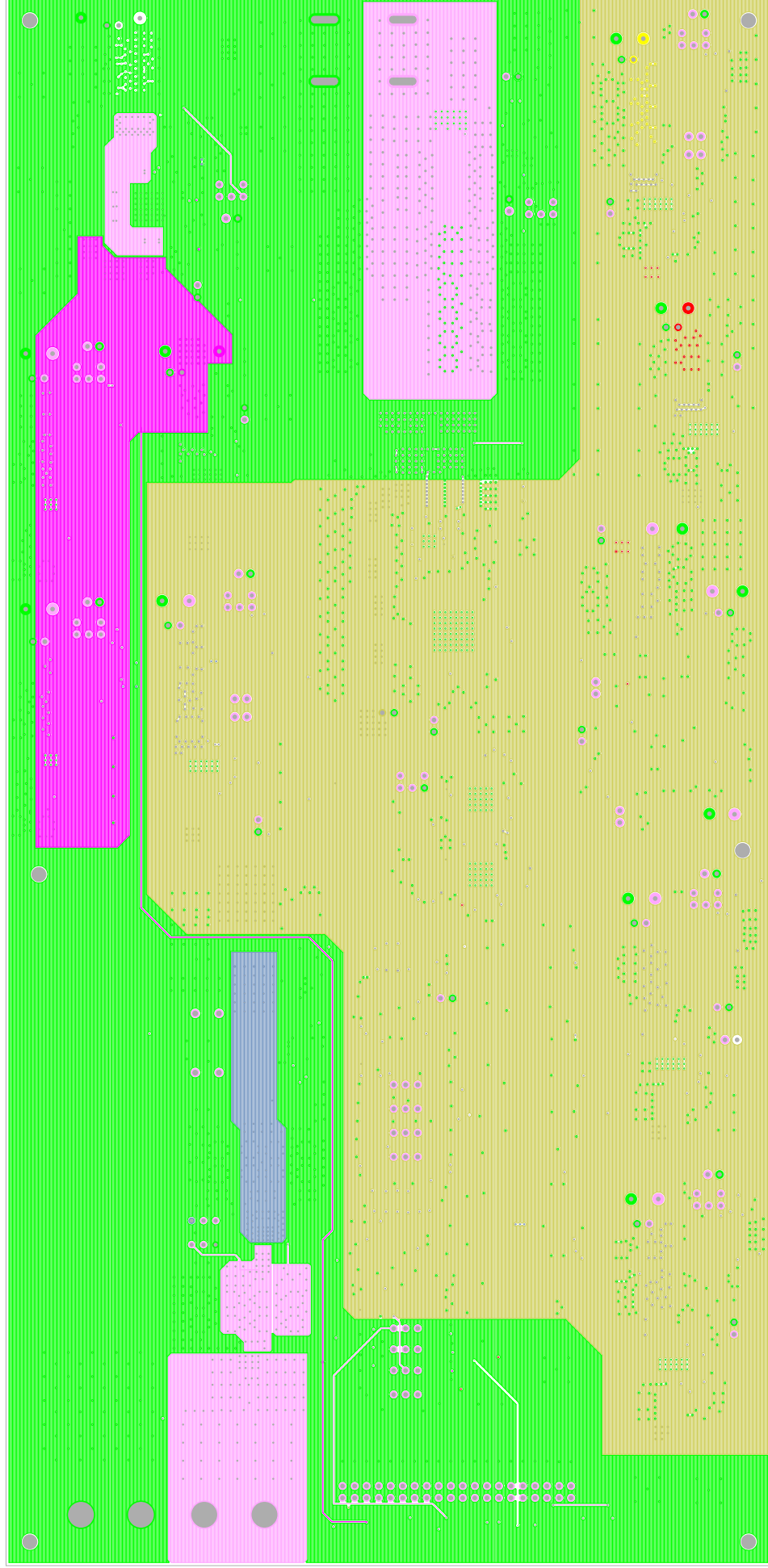
LAYER 3  
INTERSIL  
07-23-2024

# ISLVERSALEMO3Z Rev.B



LAYER 4  
INTERSIL  
07-23-2024

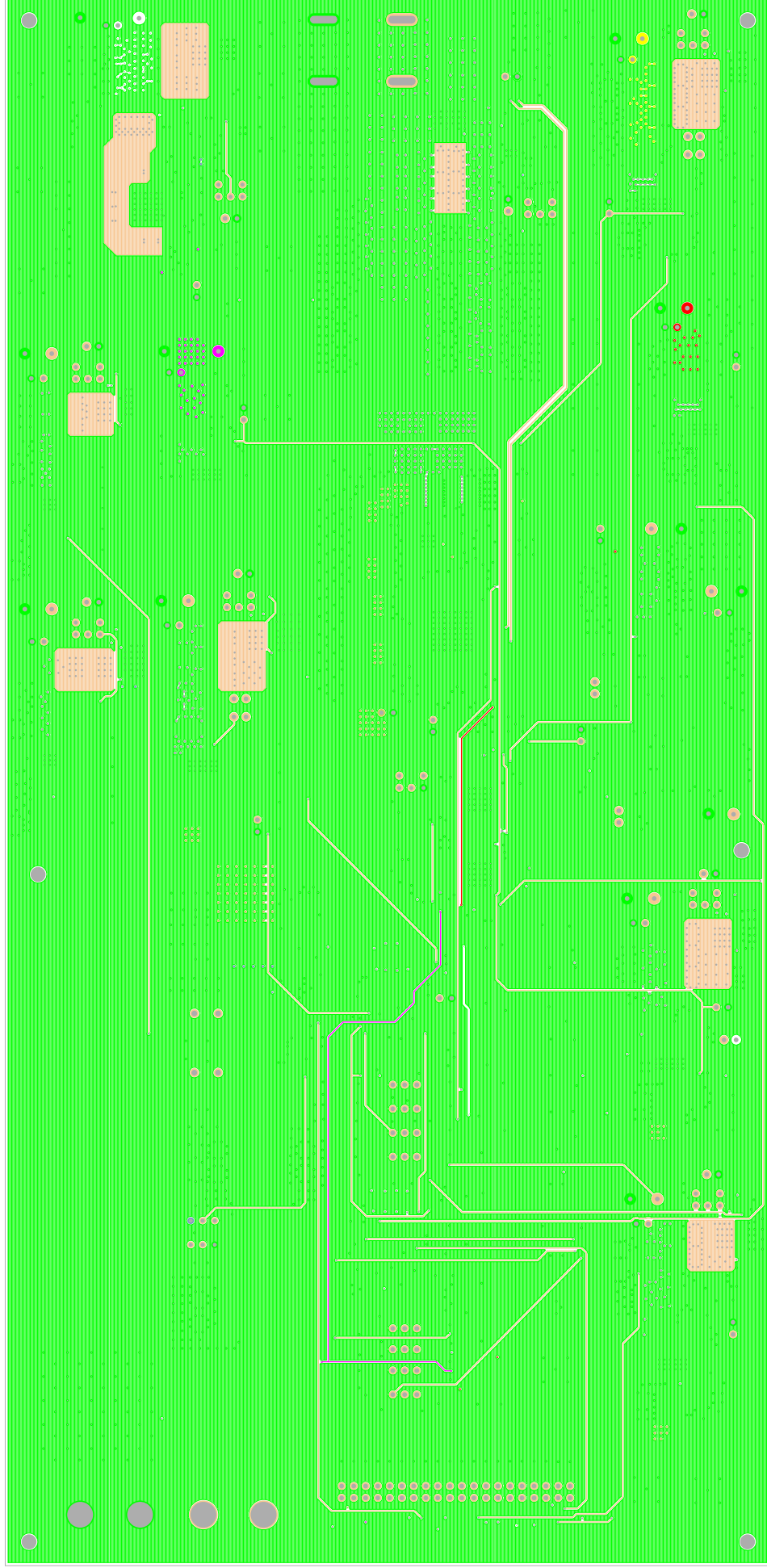
ISLVERSADEMO3Z Rev.B



LAYER 5  
INTERSIL  
07-23-2024



ISLVERSADEMO3Z Rev.B

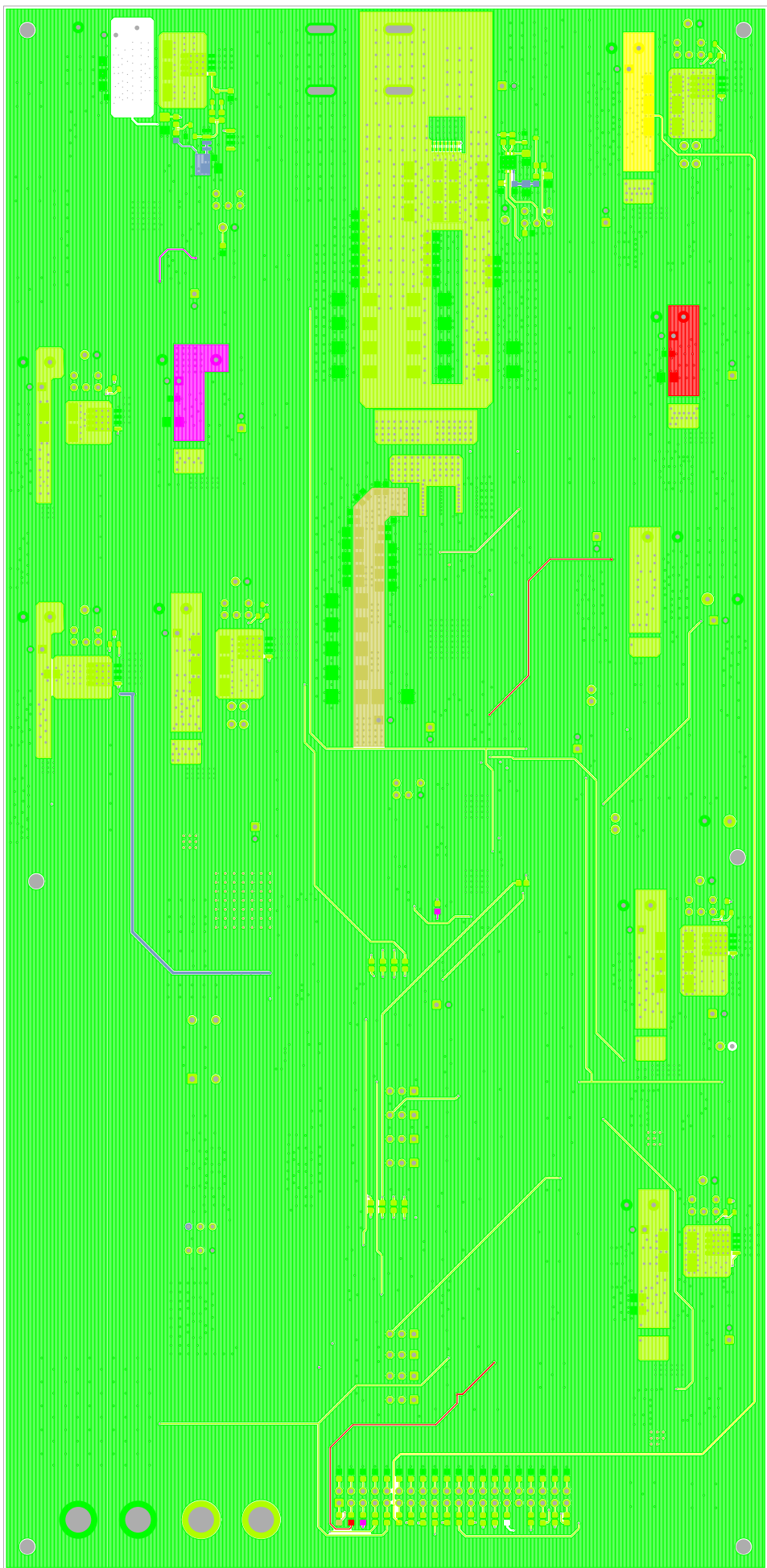


LAYER 6  
INTERSIL  
07-23-2024



LAYER 7  
INTERL  
07-23-2024

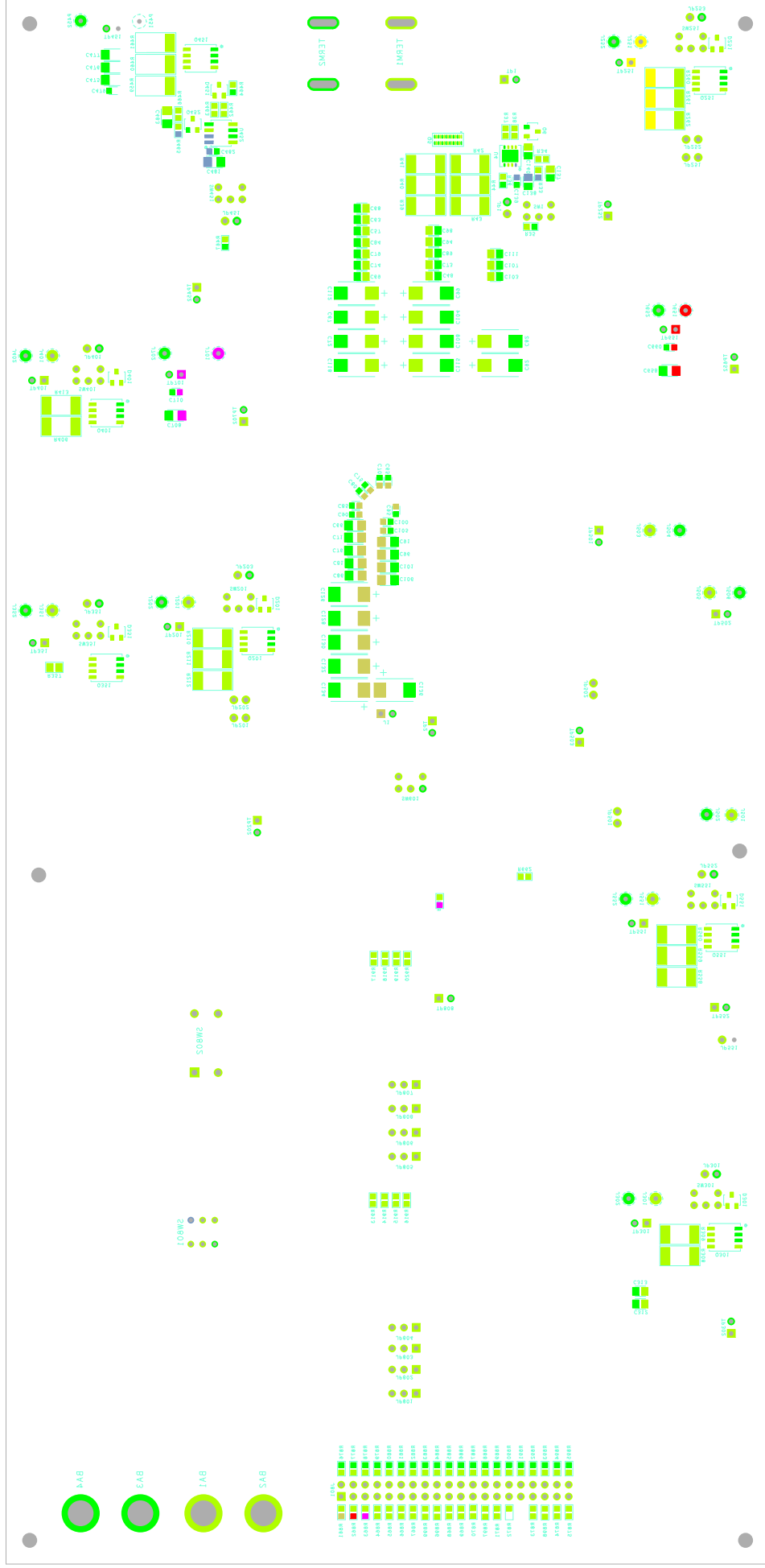
ISLVERSADEMO3Z Rev.B



LAYER 8 BOTTOM LAYER SOLDER SIDE

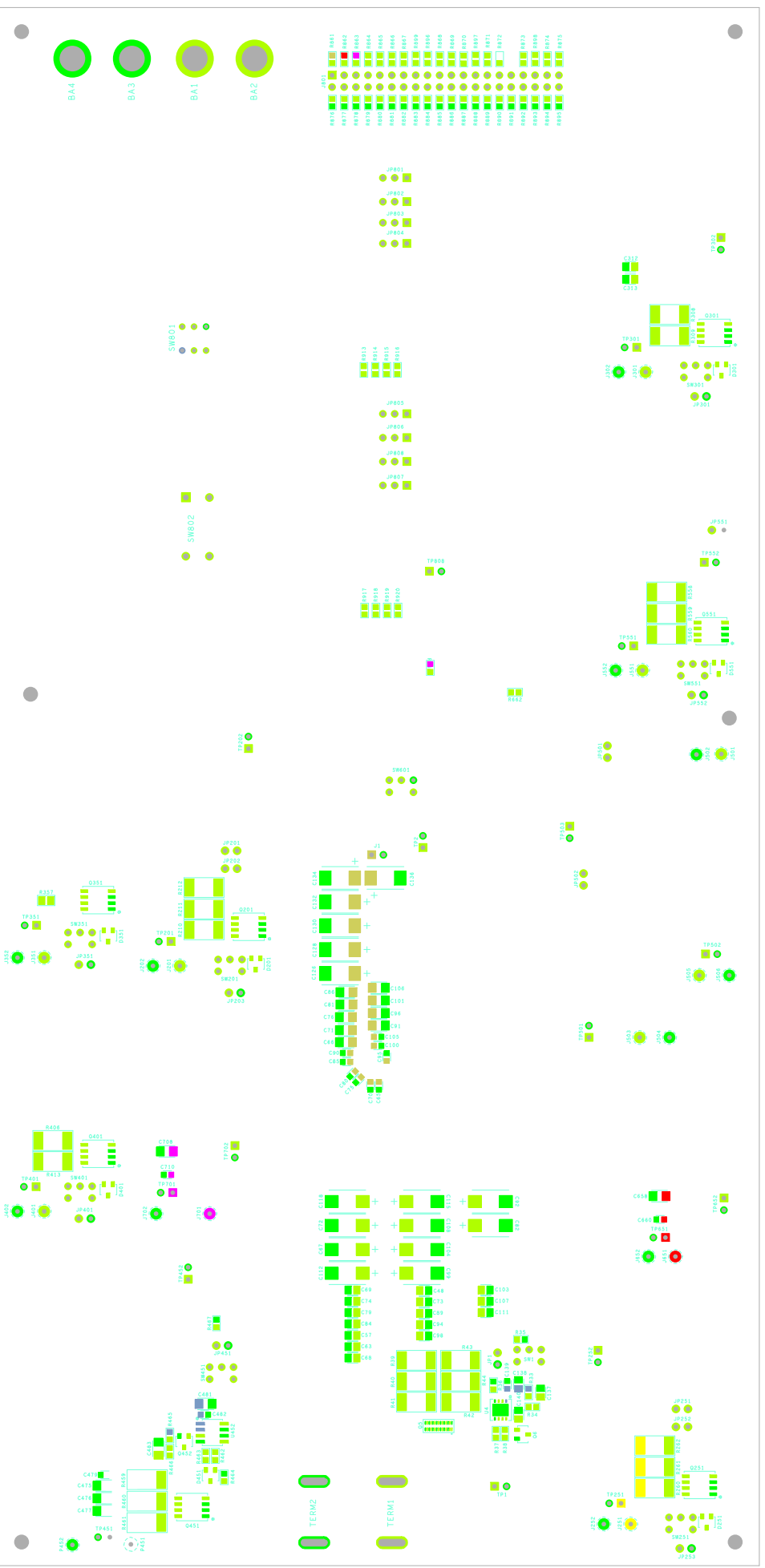
LAYER 8  
INTERSIL  
07-23-2024

## ISLVERSALDEMO3Z Rev.B



SILK SCREEN BOTTOM  
INTERFIL  
07-23-2024

01-S3-S054  
INLETSIT  
SITK SCREEN BOTTOM

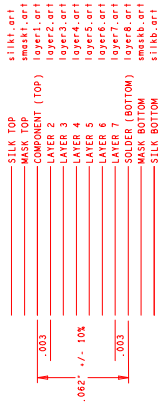


ISTAEBSAT DEMO3Z Rev. B

01-S3-S054  
INTERST  
ASSEMBLY BOLLON

ISTAEBSVT DEMO3Z Rev. B

PHYSICAL BOARD DIMENSIONS  
& LAYER STRUCTURE



\*\* If it is critical that Layer 1 and Layer 2 and Layer 3 are not mixed up, please specify approximately at the specified distance.

DRILL CHART: TOP to L5				
ALL UNITS ARE IN MILS				
FIGURE	SIZE	PLATED	QTY	
•	10.0	PLATED	450	
•	11.0	PLATED	28	

DRILL CHART: TOP to L6				
ALL UNITS ARE IN MILS				
FIGURE	SIZE	PLATED	QTY	
•	10.0	PLATED	91	

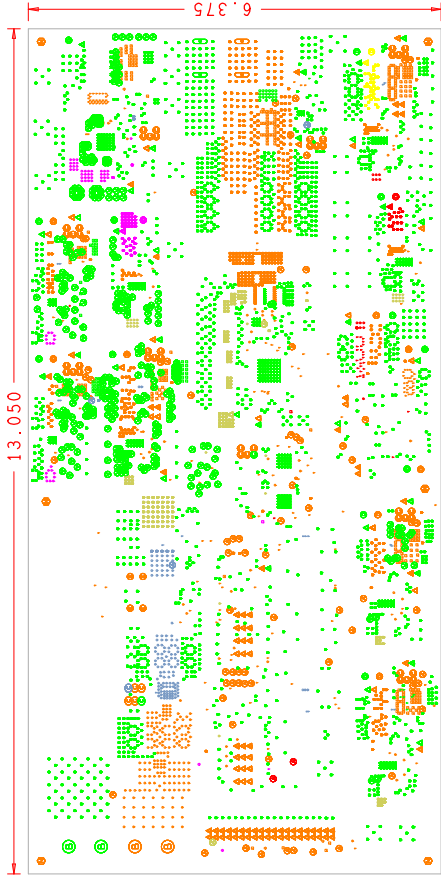
DRILL CHART: L3 to BOTTOM				
ALL UNITS ARE IN MILS				
FIGURE	SIZE	PLATED	QTY	
•	10.0	PLATED	15	

DRILL CHART: L4 to BOTTOM				
ALL UNITS ARE IN MILS				
FIGURE	SIZE	PLATED	QTY	
•	10.0	PLATED	28	

DRILL CHART: L6 to BOTTOM				
ALL UNITS ARE IN MILS				
FIGURE	SIZE	PLATED	QTY	
•	10.0	PLATED	249	
•	11.0	PLATED	142	

NOTES:

1. THIS BOARD IS RoHS COMPLIANT.
2. PRINTED WIRING BOARD DESIGN AND ACCEPTANCE CRITERIA SHALL BE IAW WITH THE REQUIREMENTS OF IPC-D-275 AND IPC-A-600.
3. MATERIAL: FR4 (RoHS COMPLIANT), 2 OZ COPPER. OUTER / 1OZ. INNER LAYERS
4. APPLY SOLDER MASK. BOTH SIDES OVER BARE COPPER IAW IPC-SM-840. CLASS 2 (LP1) (BLUE MASK).
5. ALL PATTERNS ARE VIEWED FROM THE PRIMARY SIDE LOOKING THROUGH THE BOARD.
6. UNLESS OTHERWISE SPECIFIED ALL HOLE DIAMETERS ARE AFTER PLATING.
7. APPLY SILKSCREEN USING WHITE NON-CONDUCTIVE EPOXY BASED INK.
8. PWB MUST BE 100% ELECTRICALLY TESTED FOR SHORTS AND CONTINUITY. USE NETLIST PROVIDED ISLVERSALDEM032B IPC356. IPC IAW IPC-D-356.
9. MARK DATE CODE AND MANUFACTURES IDENTIFICATION ON SOLDER SIDE PER IPC-6011 AND IPC-6012.
10. TOLERANCE ON ALL DRILL HOLES SHALL BE IAW IPC-D-2221 & 2222 UNLESS OTHERWISE SPECIFIED.
11. PLEASE KEEP OR SILKSCREEN THE INTERSIL LOGO ON BOARD. DO NOT SWITCH TO RENESAS LOGO ON THIS BOARD.
12. ALL 11 MIL VIA'S ARE TO BE NON-CONDUCTIVE EPOXY FILLED AND CAPPED.
13. U3 BODY TO BE DOUBLE SIDED TAPED TO CENTER OF 02.03 AND 04.



DRILL

Drawn By:	Tina Klemann	Reviewed By:	John Garcia
Approved By:		Approved By:	ISLVERSAL
Approved By:		Approved By:	DEM03 Board Layout
interSil		DATE:	2024-07-23
		FILENAME:	1 of 1